

Outcomes of Equipment's Procured

Sr. No.	Department	Package Name	Outcomes
1	Civil Engineering	PG Highway Lab (Package 1)	<ol style="list-style-type: none">1. Pavement overlay design for Road between Sector 38/39 using Bump Integrator.2. Comparison of Traffic Characteristics using Automatic Traffic Counter cum classifier and manual method.

Asphalt Content Tester



Bump Integrator



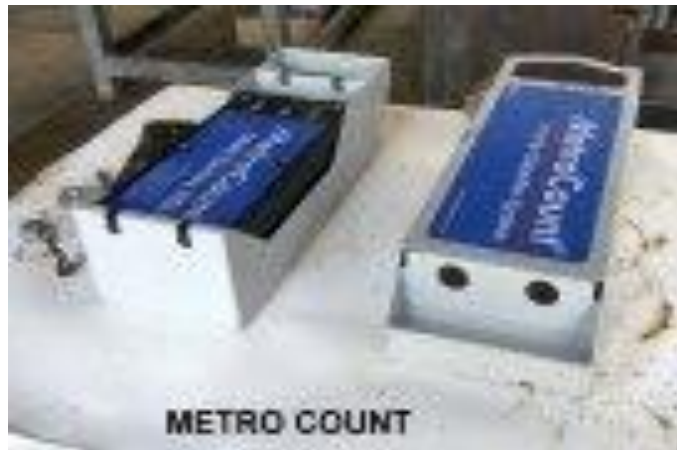
Core Cutter Testing Machine



Outcomes of Equipment's Procured

Sr. No.	Department	Package Name	Outcomes
2	Civil Engineering	PG Highway Lab (Package 2)	<ol style="list-style-type: none">3. Deflection measurements using Bump Integrator.4. Development of Pavement Management System for Urban Road Network.

Metro Count



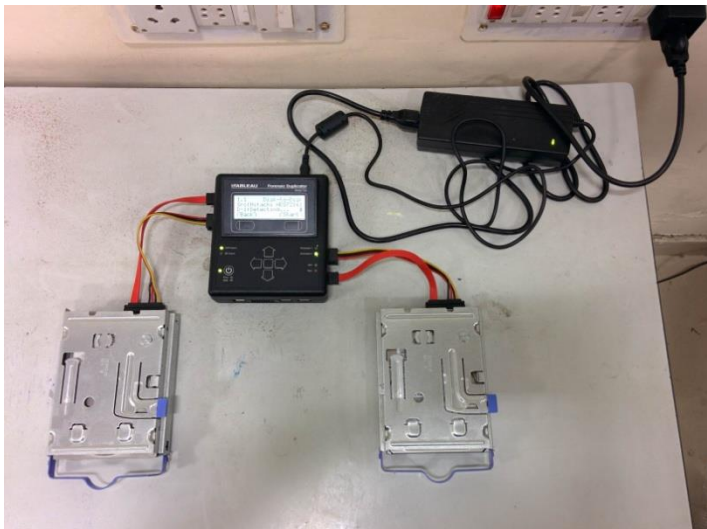
Nuclear Moisture Density Test Apparatus



Outcomes of Equipment's Procured

Sr. No.	Department	Package Name	Outcomes
3	Computer Science & Engineering	Forensic Equipment for Cyber Security Lab	A Novel Approach to deliver real-time operational intelligence from network infrastructure and devices
4		Computing Equipments Servers and Thin Clients	
5		Machine Data Analytical Tool	

Forensic Disk Duplicator



XRY Forensic Kit



Outcomes of Equipment's Procured

Sr. No.	Department	Package Name	Outcomes
6	Electrical Engineering	Digital Calibrator	<ol style="list-style-type: none"> The energy audit lab caters a facility for B.Tech, M.Tech. and PhD students working in the area of energy and environment. Students complete their M.Tech , B.Tech and Ph.D projects and thesis works using the facility of the lab and trained in this way to the equipments available in the lab.
7		Load Manager and Accessories	
8		Meters	
9		Power Quality Analyzer	

Battery Capacity Tester



LCR Meter



Insulation Resistance Tester



Outcomes of Equipment's Procured

Sr. No.	Department	Package Name	Outcomes
10	Electrical Engineering	Tester	3. Experiments related to the curriculum of UG/PG and PhD research. Lab is accessible to all students UG/PG/PhD for utilization for the purpose of their projects and thesis work.
11		Civil works in Electrical Engineering Department.	
12		Mechanical Energy Effect Measurement	
13		Computer & Peripheral	
14		Analyzer	
15		Thermal Measurement	

Analyzer



Thermal Imager



Outcomes of Equipment's Procured

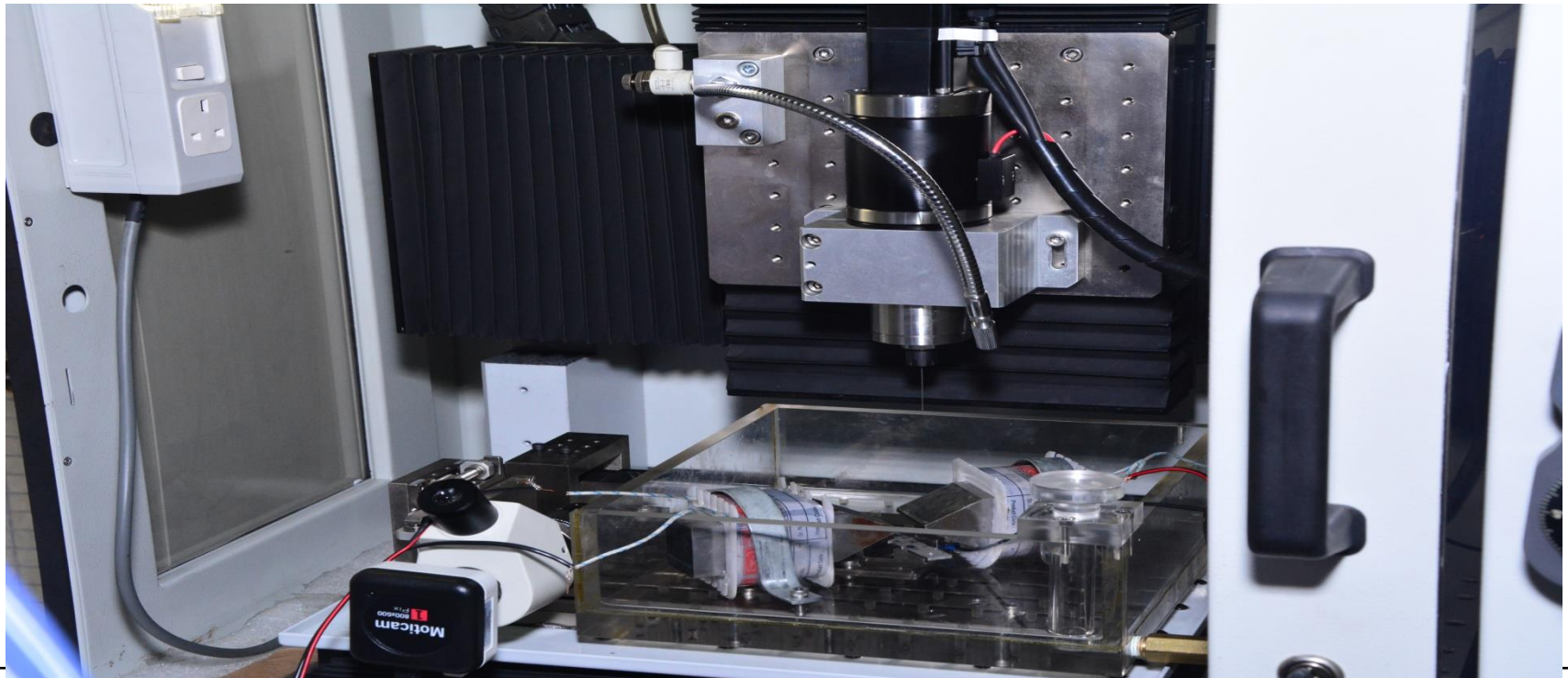
Sr. No.	Department	Package Name	Outcomes
16	Electronics & Communication Engineering	Cadence VLSI University Bundle Analog Suite FE & BE	Establishment of PG research VLSI design lab for new program in ME – Electronics (VLSI Design) ME – Electronics (VLSI Design) was started in 2012.
17		Communication Lab-I	
18		Communication Lab-II	
19		Up gradation of Embedded system lab	
20		Communication Lab (Computers)	

Embedded System Lab Chips



Outcomes of Equipment's Procured

Sr. No.	Department	Package Name	Outcomes
21	Mechanical Engineering	Advanced Manufacturing Technology Lab	Thesis Dissertation on the micro machining of CFRP material. 25 ME First year students for the conduct of micro-machining exercises



Outcomes of Equipment's Procured

Sr. No.	Department	Package Name	Outcomes
22	Materials & Metallurgical Engineering	Metallurgical Microscope	An optical microscopy illumination technique used to enhance the contrast in unstained, transparent samples. Useful for ceramic coatings studies
23		Electrochemical Workstation with FRA Module	Complete corrosion studies including corrosion rate, Linear and Cyclic Polarization studies, electrochemical Impedance studies

Compression Press



Electrochemical Workstation



Heat Treatment Furnace



Outcomes of Equipment's Procured

Sr. No.	Department	Package Name	Outcomes
24	Materials & Metallurgical Engineering	Heat Treatment Lab	For heat-treatments, 16 cycles of heating-cooling cycles can be controlled
25		Vacuum Sintering Furnace-RI	For Sintering of green compacts formed via powder metallurgy routes
26		Compression Press R3	For powder metallurgy field
27		Lab size Rolling Mill	For metal forming and thermo-mechanical treatment studies

Melting Furnace



Metallurgical Microscope



Vacuum Sintering Furnace



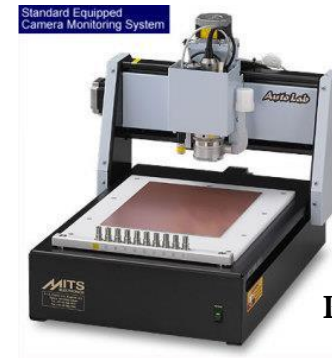
Outcomes of Equipment's Procured

Sr. No.	Department	Package Name	Outcomes
28	Production Engineering	Up-gradation of existing Work Study and Ergonomics laboratory	Facilities in Human Engineering Lab
29		New Master's program in the Area of Design	PCB Prototyping Machine and Altium Software

Polyjet Prototyping Machine : EDEN 260V



Fused Deposition Modeling (FDM) : Fortus 400 MC (Small)



Portable EMG System

