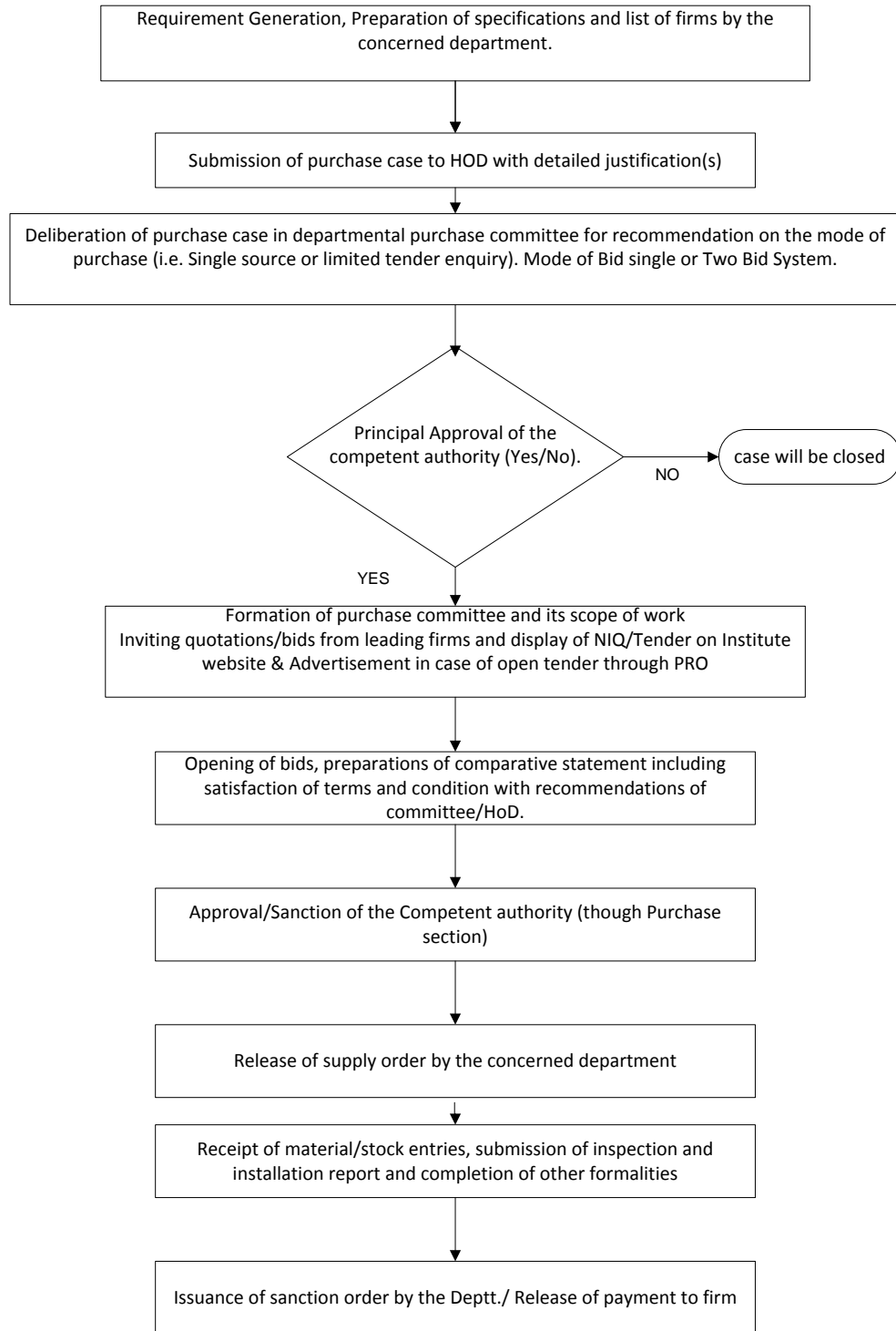


**Flow Chart of purchase procedure (Above Rs 15,000/- and upto Rs 1.00 Lac)**



**Competent Authority : Non Plan (Consumable) HoD upto Rs.10,000, Deputy Director upto Rs.50,000  
Plan (Non Consumable) HoD upto Rs.50,000, Deputy Director upto Rs.1,00,000**